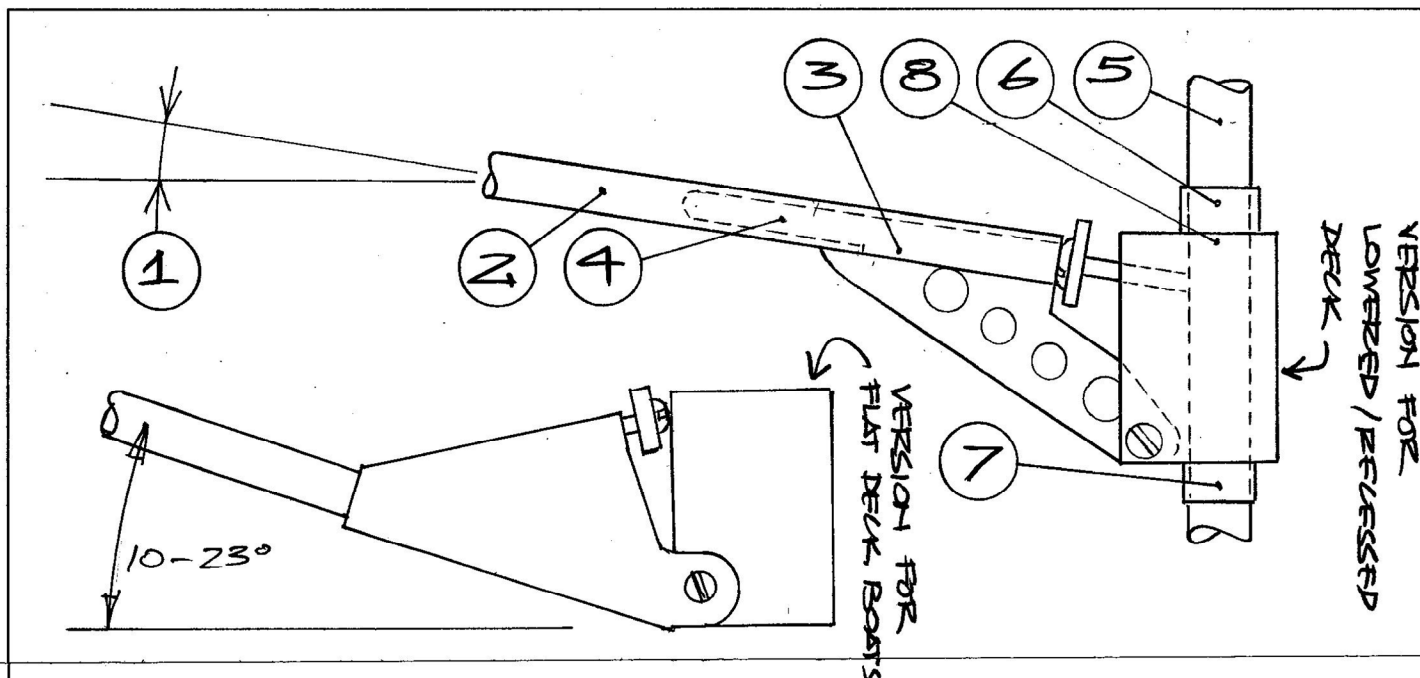


Fitting Description	ball raced gooseneck/compression strut – concentric axis		
Applications	8 mm round mast for 65, RG65 & other small yachts		
Drawing Code	Product Information	PI 12-65	<i>copyright SAILSetc 2019</i>
Contents	Qty	1	Item gooseneck/compression strut unit



- 1 The angle of the boom may vary between 0 and 18 degrees. The rigs on the SAILSetc boat have booms at 10 degrees to the horizontal.
- 2 The boom should have an internal diameter of 4 mm or more. 6 mm diameter carbon tube with a 1 mm wall thickness seems ideal.
- 3 Cut a 1 mm wide slot in the underside of the boom tube for a length of 25 mm and abrade the inside of the boom tube for at least 25 mm from the forward end.
- 4 Bond the boom tube to the stainless steel plate using epoxy resin and allow to cure before adding the gooseneck to the rig.
- 5 The gooseneck unit is designed to fit an 8 mm diameter mast. 5/16" diameter aluminium tube may also fit this gooseneck item.
- 6 The gooseneck unit should butt up against a short piece of tube bonded to the mast. This could be a 6 mm length of 8 mm internal diameter carbon tube. A wrapping of carbon tow bonded using epoxy resin or cyano glue could be used. A wrapping of Dyneema wetted with epoxy resin will work well too.

DO NOT ATTEMPT to bond the gooseneck unit or its bearings to the mast